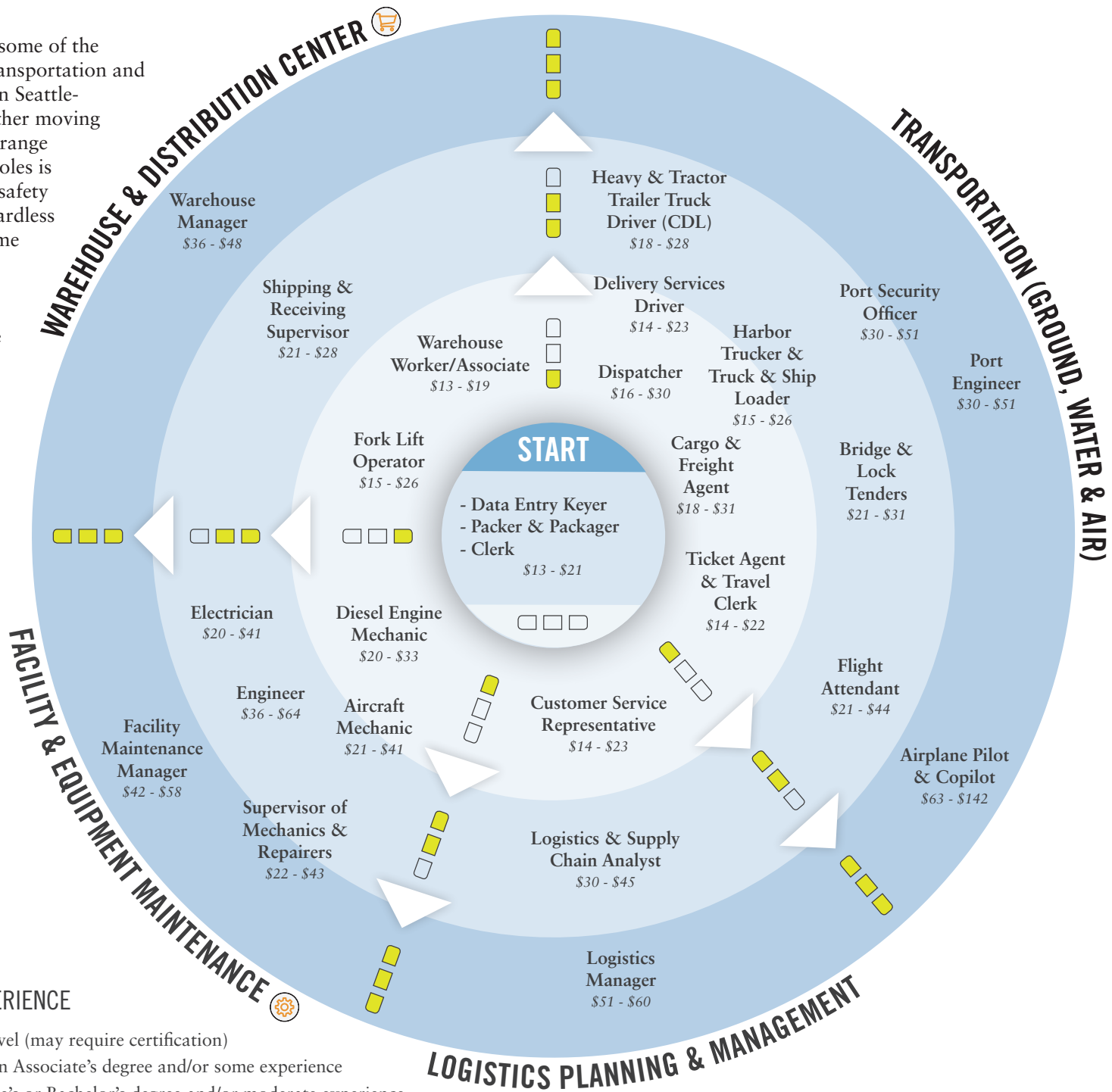


MAP your CAREER

JOB INFO & MORE AT [MapYourCareer.org/Transport](https://www.mapyourcareer.org/transport)

This map includes some of the most in-demand transportation and warehousing jobs in Seattle-King County. Whether moving goods or people, a range of interconnected roles is required to ensure safety and efficiency. Regardless of where goods come from, shipping and storage are an integral and often invisible step in the transportation process. An entry-level position in a warehouse can provide a view into the many facets of the industry.



TRANSFER SKILLS BETWEEN

- Manufacturing
- Trade

EDUCATION / EXPERIENCE

- Entry-level (may require certification)
- Less than Associate's degree and/or some experience
- Associate's or Bachelor's degree and/or moderate experience
- Advanced degree and/or significant experience

TRANSPORTATION & WAREHOUSING



This map sponsored by



Range of hourly wages from entry-level to experienced (2018), Emsi