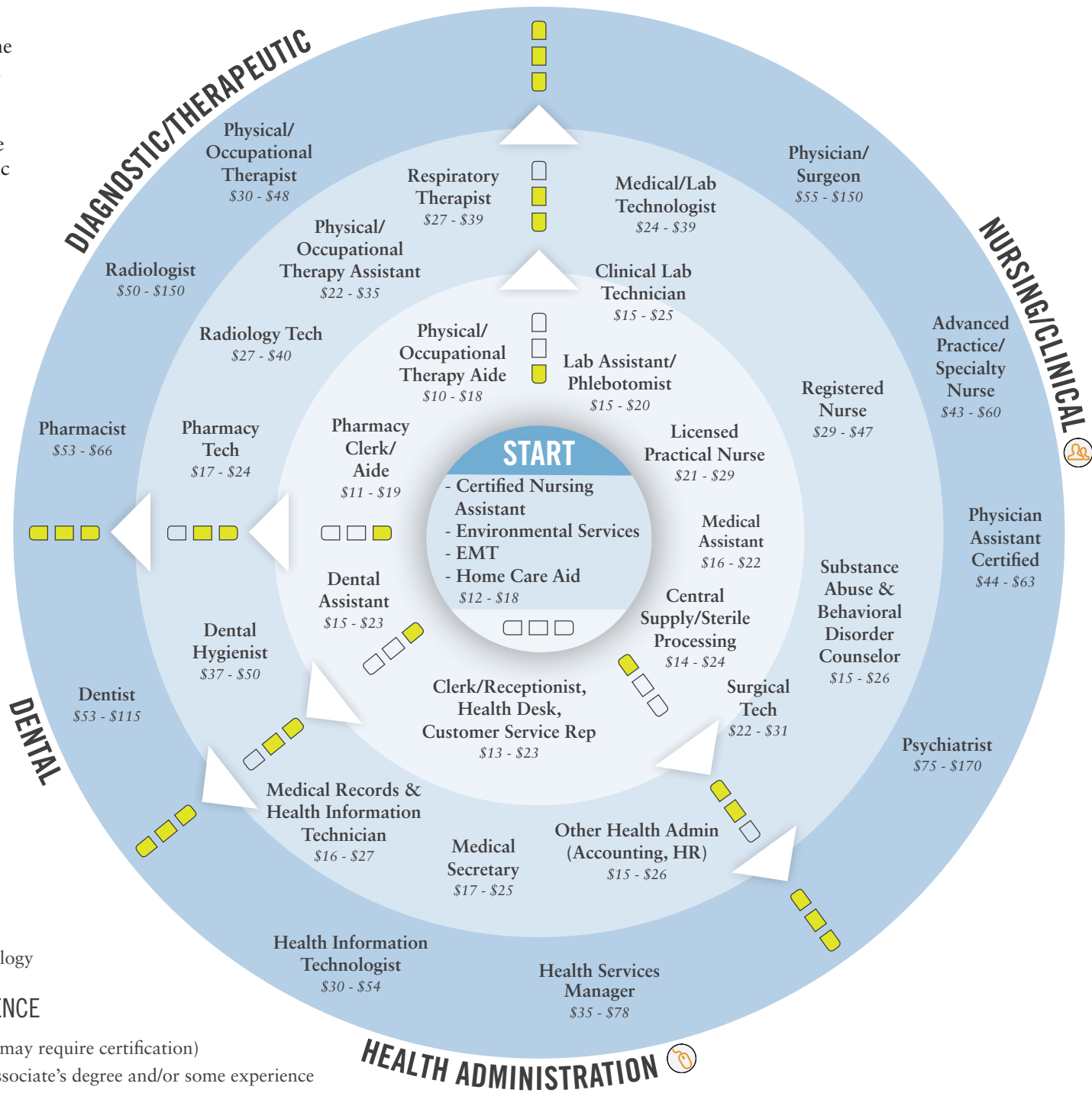


MAP your CAREER
 JOB INFO & MORE AT
MapYourCareer.org/Healthcare

HEALTHCARE

This map includes some of the most in-demand healthcare jobs in Seattle-King County, including branches like nursing and therapeutic care, but the industry has many other opportunities—from behavioral health to marketing. Although career progression is largely tied to education, entry-level positions provide a helpful window into healthcare’s different branches.



TRANSFER SKILLS BETWEEN

- Public Sector
- Information Technology

EDUCATION / EXPERIENCE

- Entry-level (may require certification)
- Less than Associate's degree and/or some experience
- Associate's or Bachelor's degree and/or moderate experience
- Advanced degree and/or significant experience

Range of hourly wages from entry-level to experienced (2018), Emsi

